

HEAVY-DUTY FORKLIFT
DIESEL PORTFOLIO

SANY

Quality Changes the World



POWER PACKS FOR EVERY TASK

PROFESSIONALS WITH POWER AND PRECISION.



**SANY HEAVY-DUTY
FORKLIFT
DIESEL PORTFOLIO**

SANY

**PERFORMANCE
COMES FROM QUALITY.
QUALITY COMES
FROM EXPERIENCE.**

SANY Europe is part of the SANY Group, a leading global manufacturer of construction machinery, port equipment and wind turbines based in Changsha, China.

We deliver customised products equipped with powerful, innovative technology to the respective national markets. Each of our models is specifically developed for the European market. With its own steel construction and spreader production facilities, SANY has the world's largest reachstacker production facility.

We also have an efficient Europe-wide dealer network that provides local users with competent support for sales, service and maintenance.

Table of contents

P. 2/3	Overview of heavy-duty forklift portfolio
P. 4/5	Top features
P. 6/7	Highlights
P. 8	Technical specifications
	Dimensions
P. 9	Load diagram
P. 10/11	Equipment

UNCOMPROMISING FOR ALL REQUIREMENTS AND AREAS OF APPLICATION

In the port or in steel production, when loading precast concrete parts or wind power components - SANY heavy-duty forklifts are in their element wherever heavy unit loads are involved. They master the most difficult conditions and move and position loads precisely and quickly. You can rely on the robust design of the box frame and the proven brand components - even in

continuous use. Another advantage: high stability thanks to optimum weight distribution and agile manoeuvring. This is how SANY heavy-duty forklifts combine the manoeuvring of heavy loads with low operating costs.



SANY



STABLE

Optimum weight distribution
allows high loads

FLEXIBLE

The right mast for
every application

CLEVER

Perfectly coordinated hydraulic
and electronic system

SAFE

Equipped with automatic reversing
camera, reversing sensors, tire pressure
monitoring and a 360° camera system
with bird's eye view

COMPACT

Clear dimensions for
quick manoeuvring,
even in confined spaces

EFFICIENT

High lifting speed for fast work

POWERFUL

Acceleration thanks to four-speed
powershift transmission with torque
converter and automatic gear shift

EASY

Large maintenance flaps on the side
of the machine for easy servicing



EASE OF OPERATION

THE NEW LIFE WITH HEAVY LOADS

The spacious cab offers a comfortable and safe workplace, equipped with a powerful air conditioning system as standard.

The joystick can be used to control several operations simultaneously, including the fork lift and distance as well as the mast tilt. The 4-speed powershift transmission with torque converter is responsible for smooth starting and the right power in every situation.

The pivoting steering column not only makes it easy for the driver to get in and out of the cab, but can also be adjusted in 3 positions for individual adjustments.

SAFETY

The best view for safe working

The large opening in the middle of the mast provides a good view of the fork and load to the front. The hydraulic lines on the mast are arranged at an angle to maximize visibility to the left and right of the mast. To the rear, the back window allows an unrestricted field of

vision when reversing and manoeuvring. In addition, the large roof glazing offers a good view upwards - it is rare to have such an all-round view.

EASE OF OPERATION

Everything at a glance

The large, central 10-inch display can be operated intuitively as a touchscreen and contains many functions such as windscreen wipers, lights or on-board diagnostics.



EASE OF OPERATION

Maintenance made easy

The driver's cab can be tilted hydraulically to the right for easy access to the transmission. Routine maintenance tasks are also completed quickly thanks to the easily accessible lubrication points and a central distribution block for lubrication points that are difficult to access.



FLEET MANAGEMENT

MACHINE DATA IN REAL TIME

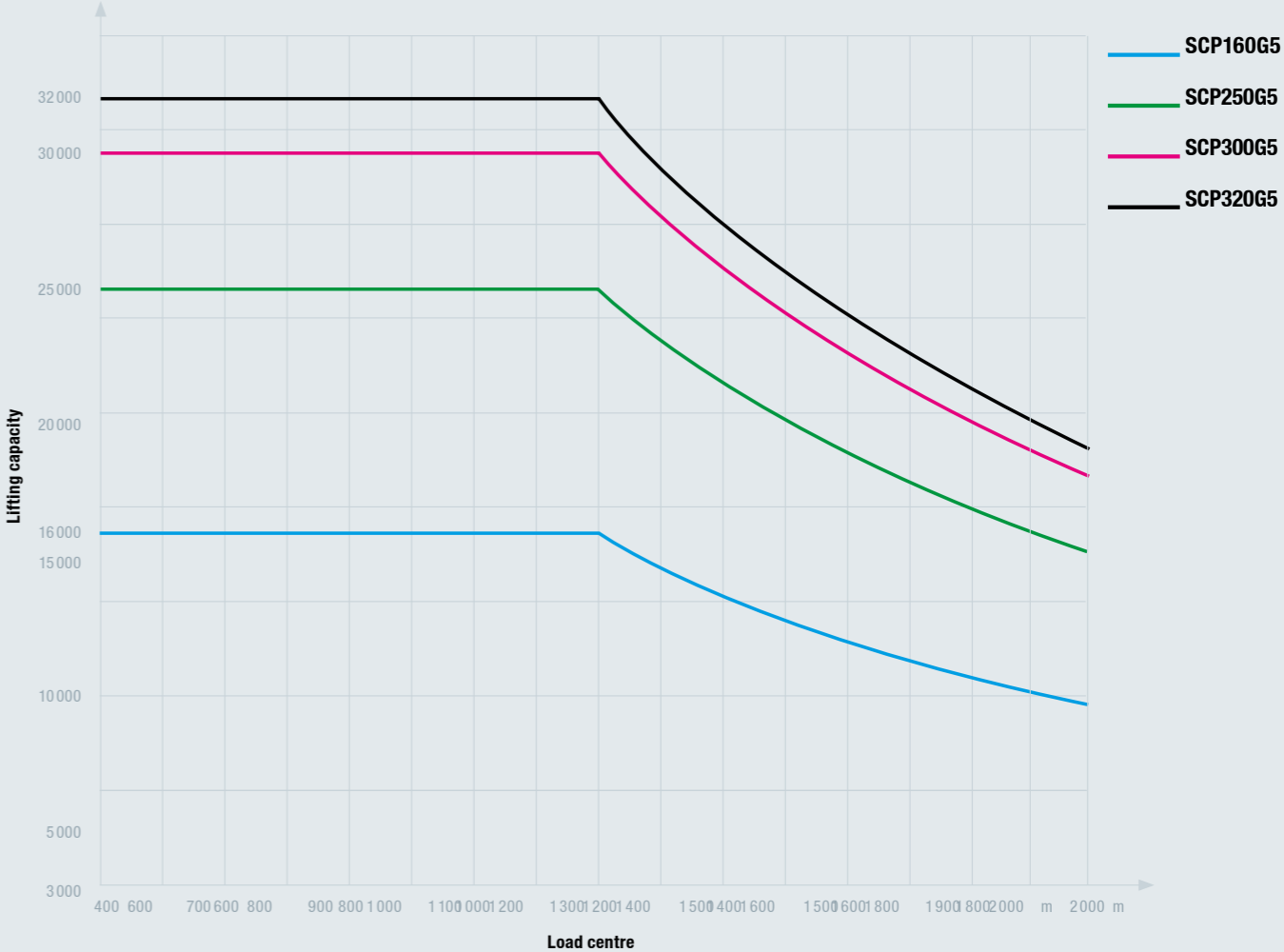
SANY has developed the digital fleet management system eVISION (EVI for short) exclusively for the European market. It allows real-time access to all important information and intelligently connects machines and processes with each other. This optimizes production and logistics processes and makes them more efficient and significantly more profitable.



TECHNICAL SPECIFICATIONS

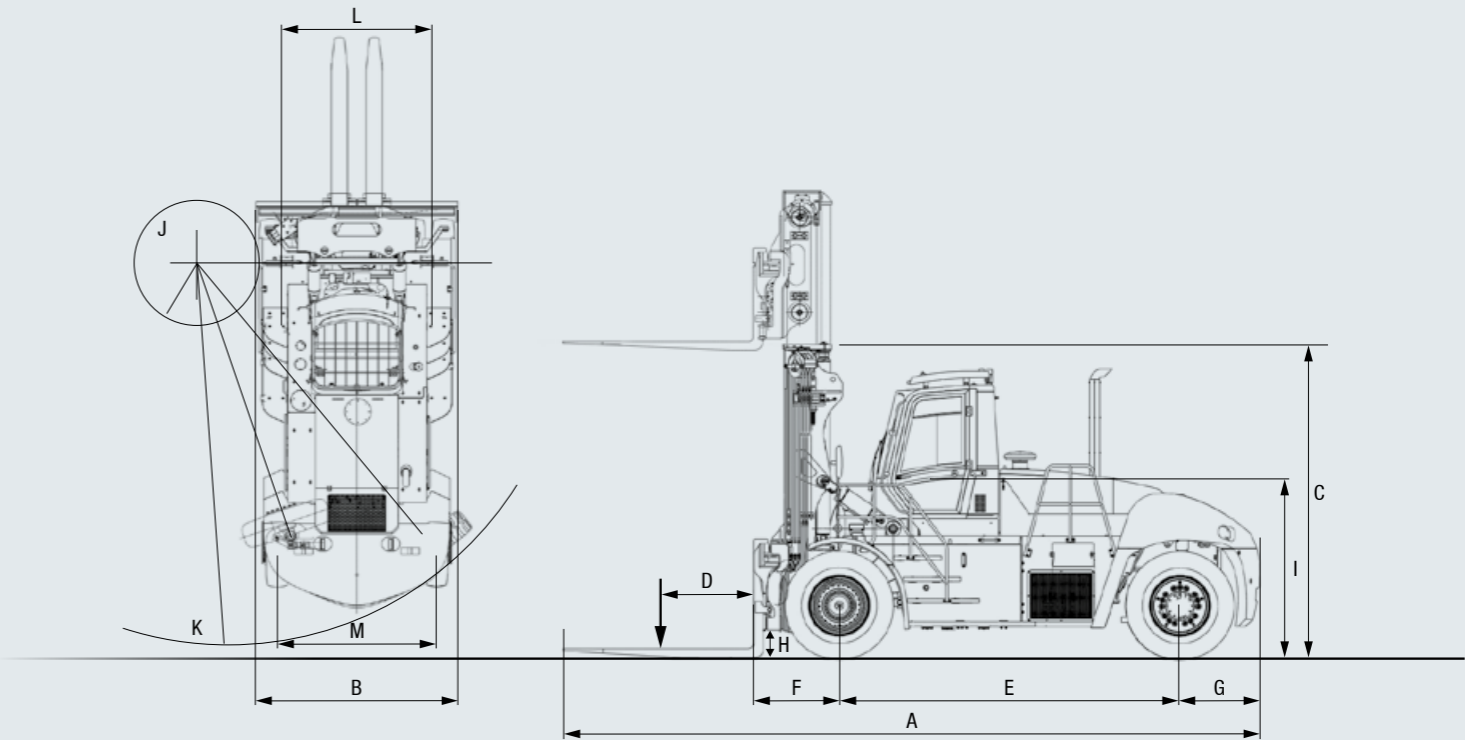
HEAVY-DUTY FORKLIFT DIESEL PORTFOLIO

Model		SCP160G5	SCP250G5	SCP300G5	SCP320G5
Registration number					
Drive		Diesel	Diesel	Diesel	Diesel
Exhaust emission level		EU-Stage V	EU-Stage V	EU-Stage V	EU-Stage V
Power	kW	168 / 2 200	185 / 2 200	185 / 2 200	185 / 2 200
Wheelbase	mm	3 750	4 300	4 500	4 500
Chassis					
Drive axle		KESSLER-D81PL478	KESSLER-D91PL488	KESSLER-D91PL408	KESSLER-D91PL408
Tyres		air	air	air	air
Tyre size		12.00-20	14.00-24	16.00-25	16.00-25
Power					
Total weight	kg	23 000	33 700	41 500	42 500
Lifting speed with / without load	mm/s	400 / 450	350 / 380	320 / 370	320 / 370
Lowering speed with / without load	mm/s	500 / 500	500 / 500	400 / 400	400 / 400
Climbing ability with load	%	39	33	25	25
Travel speed with / without load	km/h	26 / 29	23 / 25	25 / 28	25 / 28
Engine					
Engine manufacturer / type		CUMMINS QSB6.7	VOLVO TAD881VE	VOLVO TAD881VE	VOLVO TAD881VE
Engine power according to ISO 14396	kW	168	185	185	185
Engine torque	Nm / UpM	1 044 / 1 500	1 175 / 1 400	1 175 / 1 400	1 175 / 1 400
Rated speed	UpM	2 200	2 200	2 200	2 200
Fuel consumption according to VDI cycle	l/h	12–22	12–22	12–22	12–22
Other					
Mast height (retracted H / extended H1)	mm	3 754 / 5 704	3 994 / 5 939	4 360 / 6 305	4 360 / 6 305
Lifting height standard H3	mm	4 000	4 000	4 000	4 000
Mast tilt (forward / backward)	°	15 / 12	5 / 10	5 / 10	5 / 10
Dimensions (length x width x height)	mm	8 065 × 2 724 × 3 595	8 790 × 3 100 × 3 804	9 265 × 3 580 × 3 917	9 265 × 3 580 × 3 917
Fork spacing (min. ~ max.)	mm	674~2 274	786~2 776	918~2 848	918~2 848



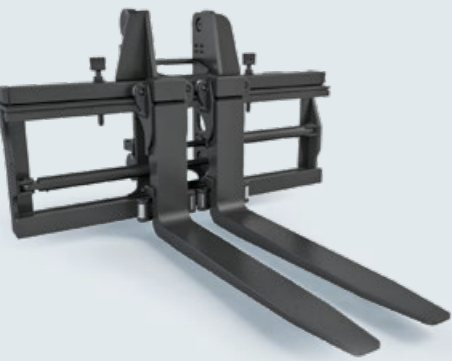
DIMENSIONS

Model		SCP160G5	SCP250G5	SCP300G5	SCP320G5
A Overall length	mm	8 144	8 790	9 265	9 265
B Overall width	mm	2 724	3 100	3 580	3 580
C Overall height	mm	3 595	3 804	3 917	3 917
D Load centre	mm	1 200	1 200	1 200	1 200
E Wheelbase	mm	3 750	4 300	4 500	4 500
F Front overhang	mm	963	1 085	1 220	1 220
G Rear overhang	mm	910	1 005	1 105	1 105
H Min. ground clearance	mm	300	350	300	300
I Seat height above ground	mm	1 870	2 040	2 195	2 195
J Inside turning radius	mm	685	940	780	780
K Outside turning radius	mm	5 200	6 000	6 300	6 300
L Front track width	mm	1 898	2 204	2 472	2 472
M Rear track width	mm	2 089	2 450	2 450	2 450

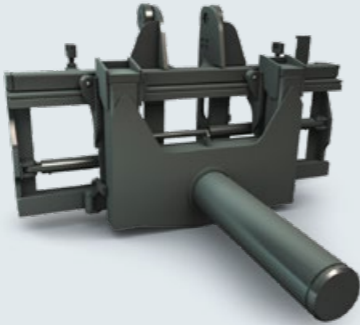


FORK / MAST

Fork dimension (W x S x L) 250 x 110 x 2 400 mm



Standard equipment - fork carriage:
Robust and with easily exchangeable forks, including sideshift and fork positioning



Optional - other attachments:
Coil mandrel and other attachments available on request



Standard equipment - duplex mast:
Ensures excellent visibility



Optional - duplex mast with free lift:
Lifting cylinder on duplex mast with free lift positioned to the side of the mast, thus unrestricted view through the central free space of the mast

DUPLEX MAST WITHOUT FREE LIFT

Lifting height	Mast height retracted	Mast height extended
3 500 mm	3 710 mm	5 405 mm
4 000 mm	3 960 mm	5 905 mm
4 500 mm	4 210 mm	6 405 mm
5 500 mm	4 710 mm	7 405 mm
6 000 mm	4 960 mm	7 905 mm

DUPLEX MAST WITH FREE LIFT

Lifting height	Mast height retracted	Mast height extended	Free lift
4 000 mm	3 960 mm	5 910 mm	2 050 mm

	Model	SCP160G5	SCP250G5	SCP300G5	SCP320G5
CABIN	Air conditioning	●	●	●	●
	10" touch colour display	●	●	●	●
	Glass roof with sunblind and protective grille	●	●	●	●
	Comfortable driver's seat with high backrest	●	●	●	●
	Driver's seat with air suspension, Electrically adjustable Lumbar supports and seat heating	●	●	●	●
	Stationary, diesel-powered cab heating	●	●	●	●
	Winter package for electrical preheating of cab, engine, diesel and hydraulic oil	●	●	●	●
	Radio	●	●	●	●
	Document holder, holder for tablet PC	●	●	●	●
SAFETY	2-litre fire extinguisher	●	●	●	●
	Automatic reversing camera	●	●	●	●
	Distance sensors at the rear	●	●	●	●
	Tyre pressure monitoring	●	●	●	●
	360° all-round view camera system	●	●	●	●
	Automatic fire extinguishing system in the engine compartment	●	●	●	●
	Emergency stop switch on both sides of the machine	●	●	●	●
	Adjustable speed limiter	●	●	●	●
HYDRAULIC SYSTEM	Load-sensing hydraulic system	●	●	●	●
	Automatic engine speed increase	●	●	●	●
MAST	Duplex mast for 4 000 mm lift height	●	●	●	●
	Choice of duplex masts from 3 500 to 6 000 mm lift height	●	●	●	●
	Duplex mast for 4 000 mm lift height with free lift	●	●	●	●
	Fork carriage with suspended forks, 2 400 mm fork length	●	●	●	●
	Individual fork adjustment	●	●	●	●
LIGHTING	LED lighting system with 12 headlights	●	●	●	●
	Rotating beacon	●	●	●	●
	Additional work lights	●	●	●	●
ELECTRONICS	Electric parking brake	●	●	●	●
	Automatic engine shutdown when idling	●	●	●	●
OTHER	Electro-hydraulic tilting cab	●	●	●	●
	External monitor for daily maintenance checks	●	●	●	●
	Automatic central lubrication system	●	●	●	●
	Special paint finish	●	●	●	●

Standard equipment ● Special option ●

The standard and special options differ depending on the country of delivery. Please contact your dealer directly if you have any questions.

SANY

Quality Changes the World

SANY EUROPE GmbH

Sany Allee 1
D-50181 Bedburg
fon +49 2272 90531 100
fax +49 2272 90531 109
info@sanyeurope.com
www.sanyeurope.com